

HW5565-30D-HP

30 dBi Dual Polarized Antenna

Technical Sheet



Specifications

General Specifications

Model Number	HW5565-30D-HP
Input	N Female
Polarization	Dual
Diameter (ft/m)	2/0.6
Color	Golden

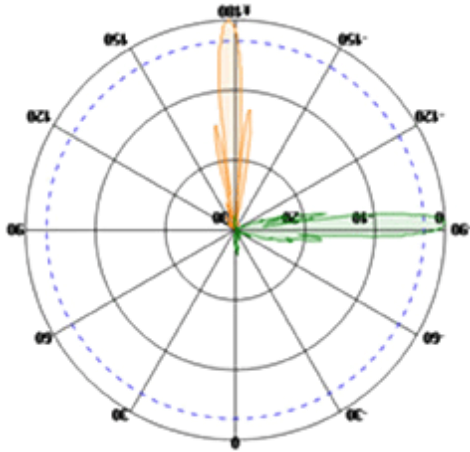
Electrical Specifications

Frequency Range (MHz)	5500-6500
VSWR	1.4 :1
Impedance (Ω)	50
Gain (dBi)	30
3dB Beam Width	H-plane: 5° / E-plane: 5°
F/B Ratio (dB)	40

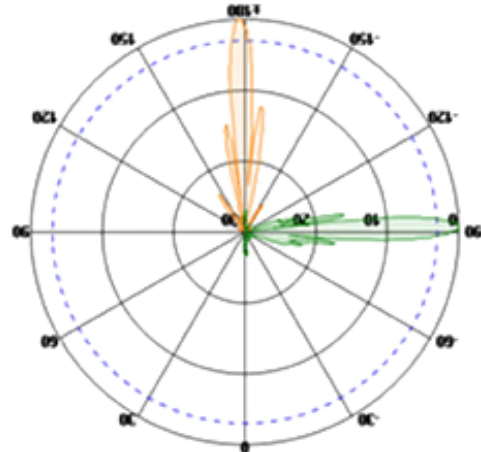
Mechanical Specifications

Weight With Holder (kg)	5.5
screws and nuts	Galvanized
Wind Loading (km/h)	200
Operating Temperature	-40 °C to 60 °C
Supportable Comparative Damp	90%
Fine Azimuth Adjustment	$\pm 15^\circ$

Patterns

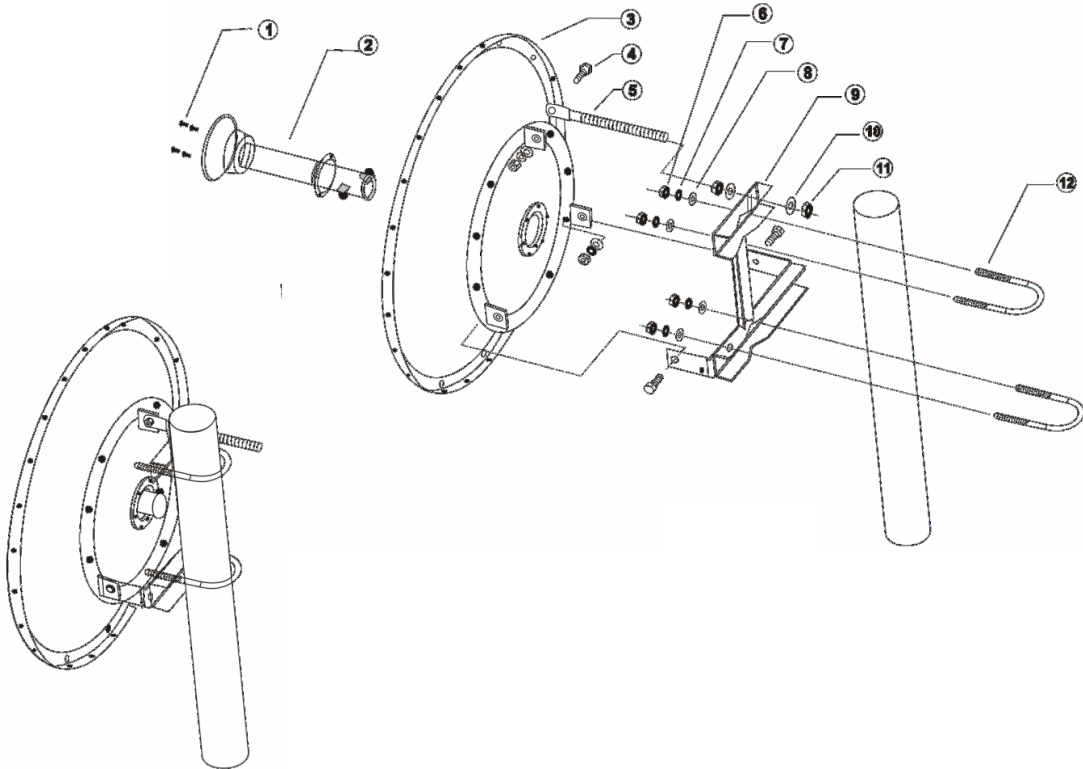


Vertical









Horizontal

Install Sketch



Mechanical Parts

	
<p>Parabolic Reflector (Q = 1)</p>	<p>Antenna Dual Polarized Feeder (Q=1)</p>
	
<p>U-Bolt (Q=2)</p>	<p>Elevation Tuner (Q=1)</p>
	
<p>Holder Bolts (Q=3)</p>	<p>Antenna Holder (Q=1)</p>
<p>Holder Bolts Washer (Q=3)</p>	
<p>Holder Bolts lock Washer (Q=3)</p>	
<p>Holder Nuts (Q=3)</p>	
<p>Elevation Tuner Nuts (Q=2)</p>	
<p>Elevation Tuner Spacer (Q=2)</p>	