

HW4961-29.48D-HP-R

29.5dBi Dual Polarized Antenna

**Technical Sheet**



**Specifications**

**General Specifications**

Model Number	HW4961-29.48D-HP-R
Input	N Female
Polarization	Dual
Diameter (ft/m)	2/0.6
Color	Golden

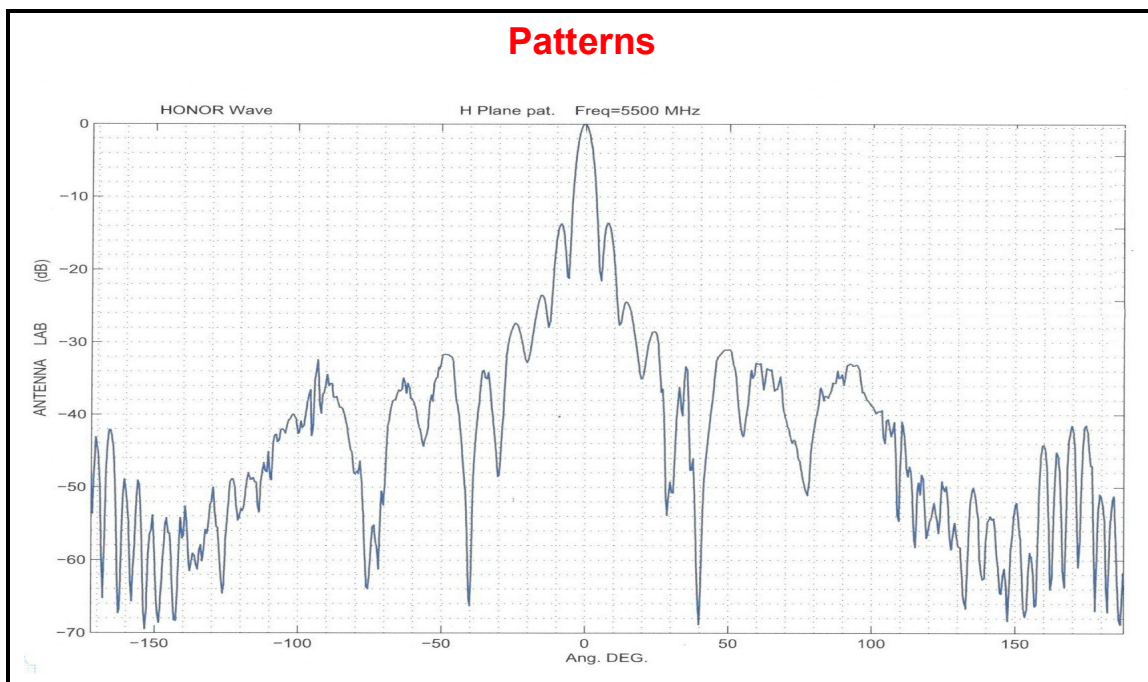
**Electrical Specifications**

Frequency Range (MHz)	5150-5850
VSWR	1.4 :1
Impedance ( $\Omega$ )	50
Gain (dBi)	29.5
3dB Beam Width	H-plane: 5° / E-plane: 5°
F/B Ratio (dB)	40

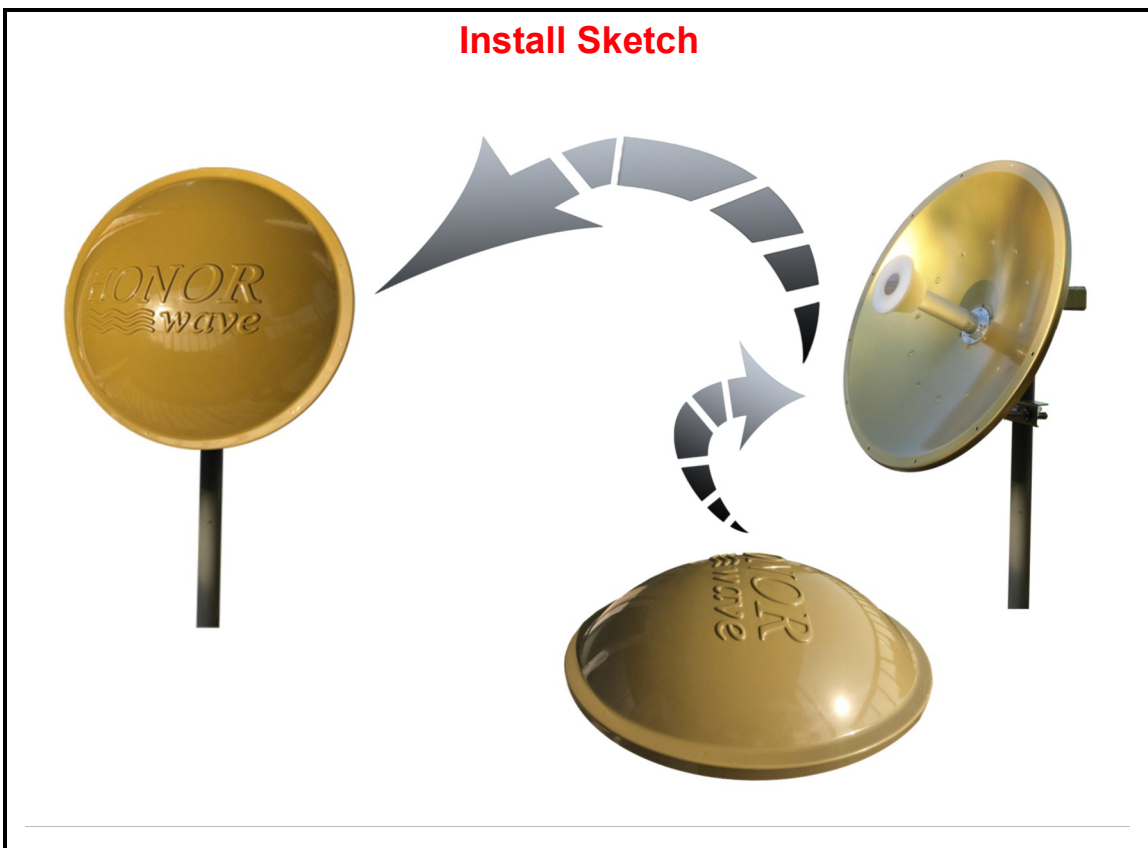
**Mechanical Specifications**

Weight With Holder (kg)	6.5
screws and nuts	Steel
Wind Loading (km/h)	250
Operating Temperature	-40 °C to 60 °C
Supportable Comparative Damp	90%
Fine Azimuth Adjustment	$\pm 15^\circ$

**Patterns**



**Install Sketch**



<b>Mechanical Parts</b>	
	
Parabolic Reflector (Q = 1)	Antenna Dual Polarized Feeder (Q=1)
	
U-Bolt (Q=2)	Elevation Tuner (Q=1)
	
Radome (Q=1)	Antenna Holder (Q=1)
	Holder Bolts (Q=3)
	Holder Bolts Washer (Q=3)
	Holder Bolts lock Washer (Q=3)
	Holder Nuts (Q=3)
	Elevation Tuner Nuts (Q=2)
	Elevation Tuner Spacer (Q=2)